

**In person:** Cnr Hovell and Lawrence streets, Wodonga, VIC 3690

**Phone:** (02) 6022 9600

**Post:** PO Box 923, Wodonga, VIC 3689 **Fax:** (02) 6022 9322 **Email:** artsspace@wodonga.vic.gov.au

Wodonga Council values arts and culture and the contribution it makes to a dynamic, diverse and holistic community.

Arts Space Wodonga is one way the council seeks to support a range of cultural practices, community development and entertainment opportunities. It offers the community a vibrant and accessible venue for the showcasing, presentation and intimate performance of local, regional and imported cultural works.

### **Arts Space Wodonga can be hired for:**

- Exhibitions;
- Presentations;
- Recitals;
- Workshops;
- Performances;
- Meetings; and
- Forums.

As a multi-purpose contemporary venue it provides the community with a cultural hub that is both accessible and professional in its applications. Its unique design optimises contemporary exhibition methods, audience access and adaptive functions, making it an ideal venue for the presentation of diverse art forms and expression.

Proposals from individual artists, groups and organisations are most welcome.

### **Presented works in Arts Space Wodonga should:**

- Demonstrate conceptual content;
- Demonstrate aesthetic content;
- Demonstrate technical skill;
- Provide maximum engagement of the community;
- Offer new and challenging experiences; and
- Contribute to a diverse program of cultural activities.

Staff support is available for the development and mounting of exhibitions and performances, ensuring the success of a hirer's project is maximised and use of the venue is seamless. .

### **The space**

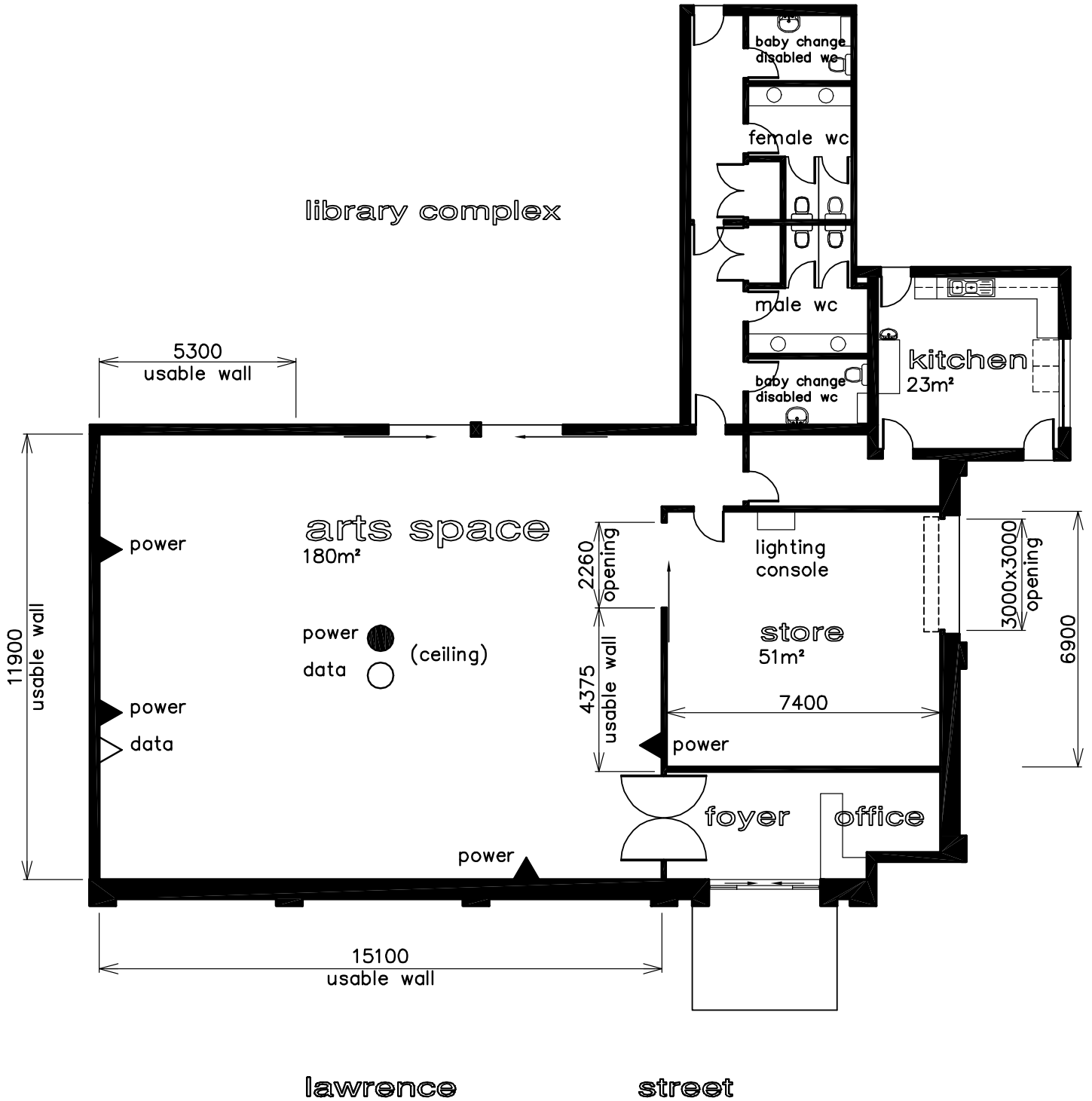
The venue consists of one large room with two main entrances, one off Lawrence St and one coming in from the Wodonga Library, maximising audience access.

- Floor space – 15.3m x 11.5m;
- Wall space – 41.7 running metres;

### **Features**

- UV filtered incandescent lighting with adjustable levels;
- Portable stage from 2440mm x 3660mm - 5490mm in size;
- 80 chairs;
- Seating capacity of up to 100 people;
- Standing capacity of up to 120 people;
- Stage lights with lighting control console;
- Audio equipment, including microphone;
- Lectern;
- Display plinths;
- Perspex cabinets; and
- Kitchen with full facilities, including glass washer.

Floor plan



Personal and or health information collected by the council is used for municipal purposes as specified in the Local Government Act 1989. The personal and or health information will be used solely by the council for these purposes and or directly related purposes. The council may disclose this information to other a if required by legislation. The applicant understands that the personal and or health information provided is for the above purpose and that he or she may apply to council for access to and/or amendment of the information. Request for access and or correction should be made to the council's privacy officer.